

DISCLAIMER:

THIS COPY WAS MADE FROM DRAWING FILES PREPARED FOR INTERNAL USE BY PERSONNEL OF THE TRAFFIC ENGINEERING AND PARKING DIVISION AND IS A TRUE COPY OF THE FILE IN THE TRAFFIC ENGINEERING AND PARKING DIVISION. THIS DIVISION DOES NOT GUARANTEE THAT THIS FILE COPY REPRESENTS PHYSICAL CONDITIONS AS THEY NOW EXIST. WITHIN ACCEPTED TOLERANCES, THE FILE WAS ACCURATE AT THE TIME IT WAS MADE. THE USER IS ADVISED TO FIELD CHECK ALL PERTINENT DIMENSIONS.

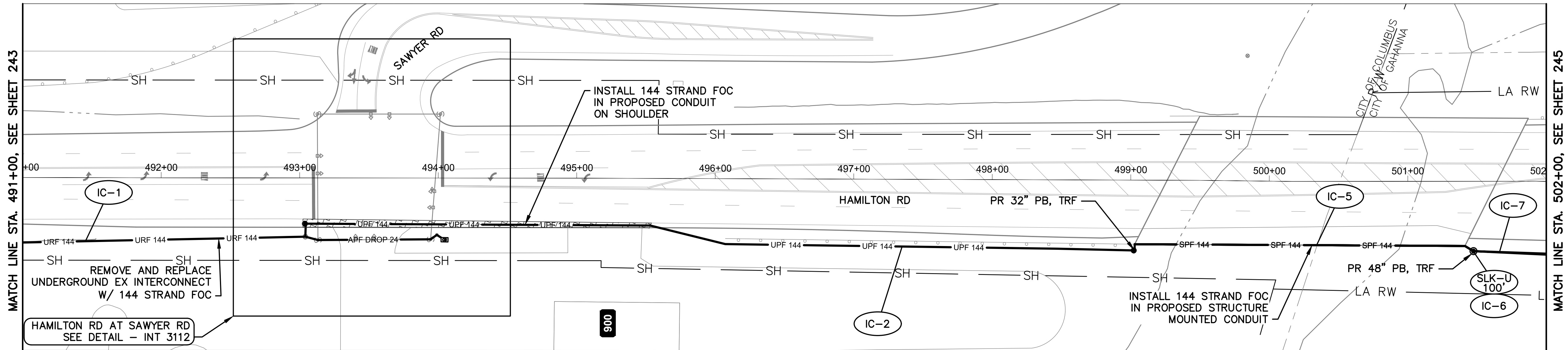
NOTES: 12 IN. HEADS NORTH & SOUTH BOUND
8 IN. HEADS EAST & WEST BOUND



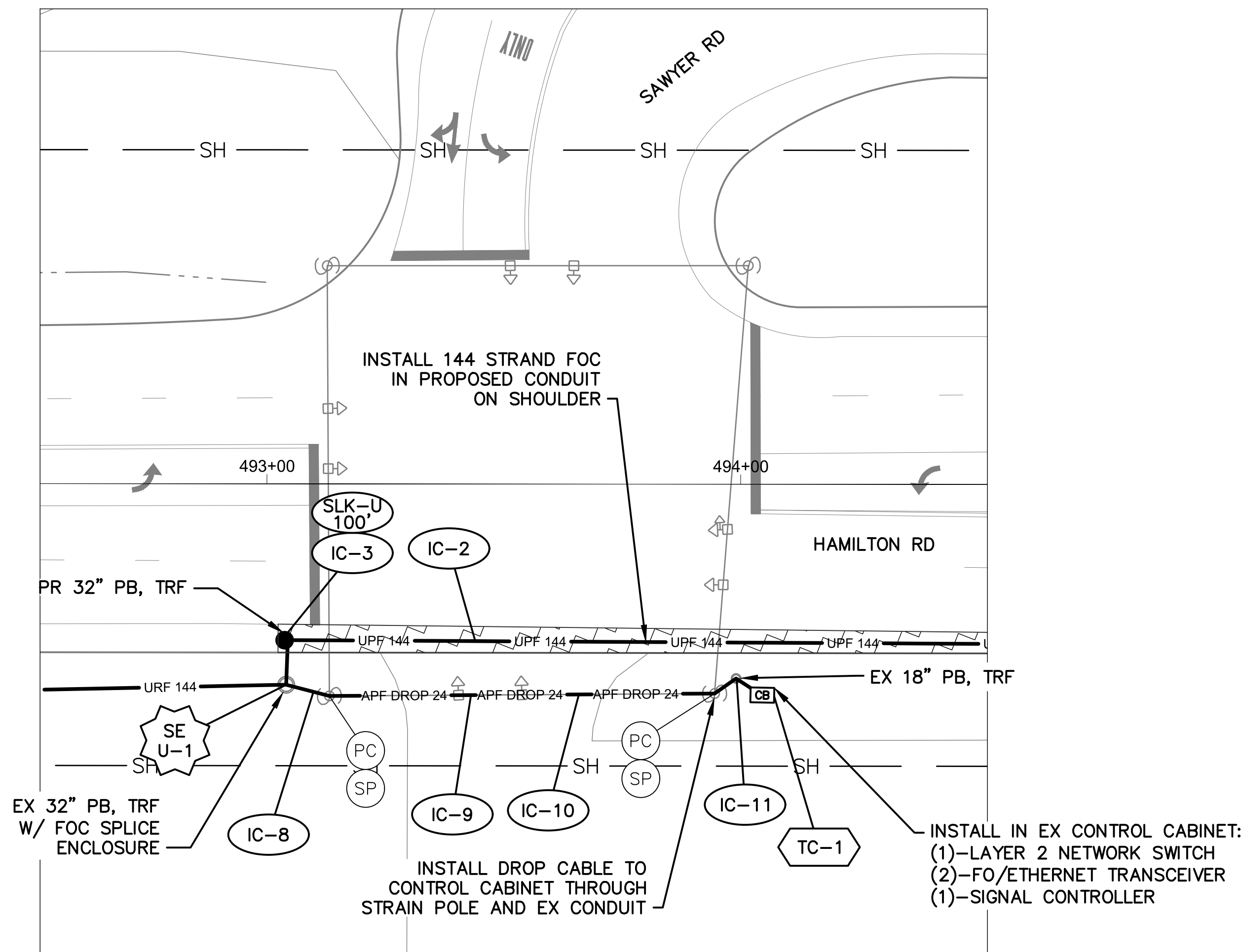
1

HAMILTON RD. & SAWYER RD.		INT # 3112	
DEPARTMENT OF PUBLIC SERVICE		GIS [FACET] 18635-7250	
DIVISION OF TRAFFIC ENGINEERING AND PARKING	CITY OF COLUMBUS, OHIO	DRAWN BY	DATE
		ACAD	10-4-92
ORIGINAL BY	DATE	DIGITIZED BY	REVIEWED/DATE
		RAE	BY
K. LEE	10-22-80	SCALE	NO.
		1"=20'	S-435

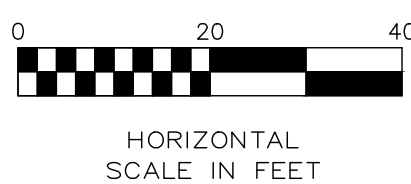
J:\Jobs\60135\TCHPR00\Sheets\CTSS_PHD_Trunk2-HAMILTON-INTERCONNECT.dwg - HAMILTON-9 layout ~ last saved by: jbeans 12/13/2019 03:26pm ~ printed 03/18/2020 07:13pm



HAMILTON RD BETWEEN STATION 491+00 AND 502+00



DETAIL - INT 3112



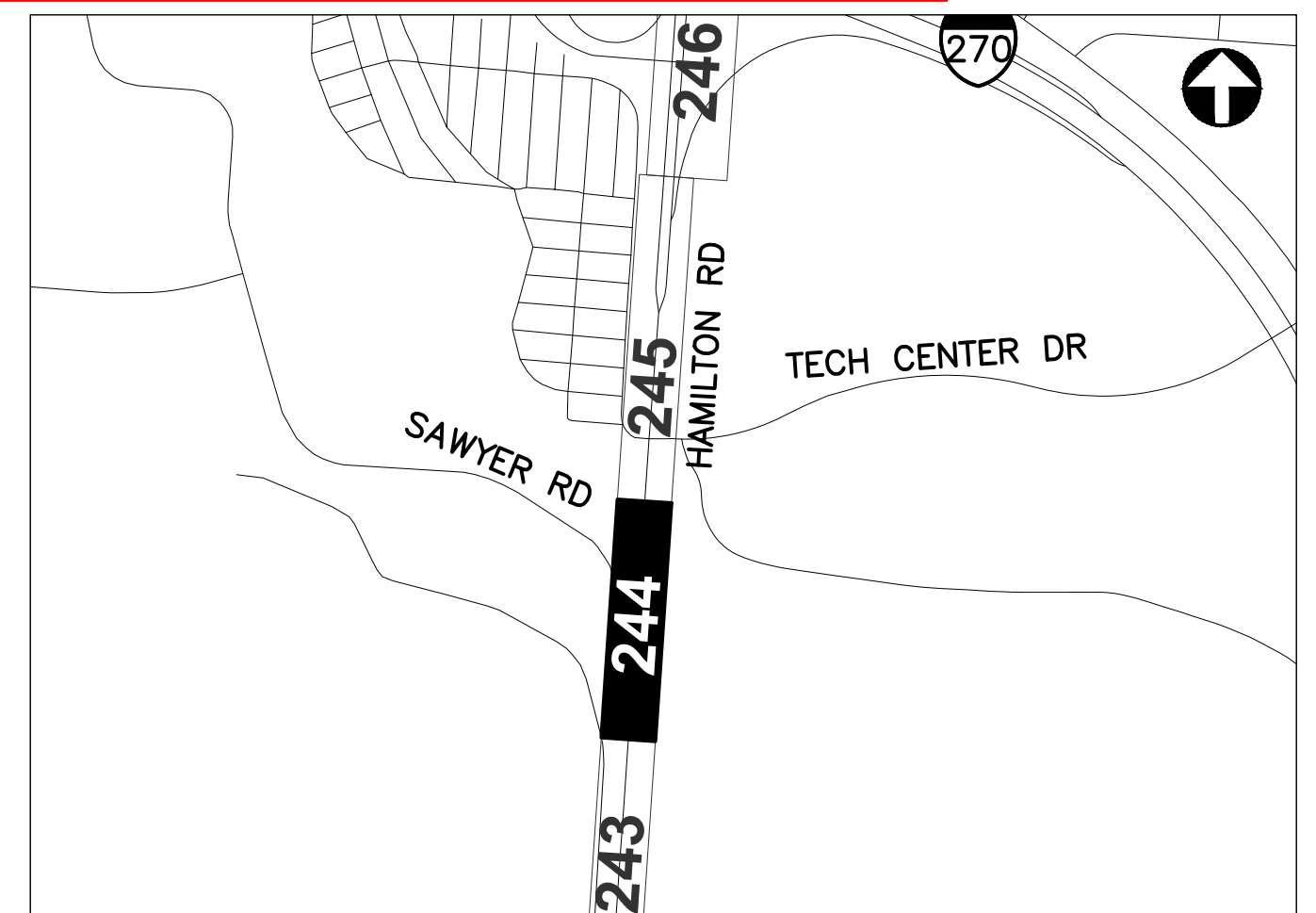
DISCLAIMER FOR ALL DRAWINGS:
THESE COPIES WERE MADE FROM DRAWING FILES PREPARED FOR
INTERNAL USE BY PERSONNEL OF THE DIVISION OF TRAFFIC
MANAGEMENT AND IS A TRUE COPY OF THE FILE IN THE DIVISION
OF TRAFFIC MANAGEMENT. THIS DIVISION DOES NOT GUARANTEE
THAT THIS FILE COPY REPRESENTS PHYSICAL CONDITIONS AS
THEY NOW EXIST. WITHIN ACCEPTED TOLERANCES, THE FILE WAS
ACCURATE AT THE TIME IT WAS MADE. THE USER IS ADVISED TO
FIELD CHECK ALL PERTINENT DIMENSIONS.

NOTES:

1. SEE SHEET 247 FOR QUANTITIES.
2. SEE SHEETS 679 & 903 FOR COMMUNICATION DETAILS.
3. AGREEMENT IN PLACE BETWEEN THE CITY OF GAHANNA AND THE CITY OF COLUMBUS TO USE THE EMPTY CONDUIT IN THIS AREA.



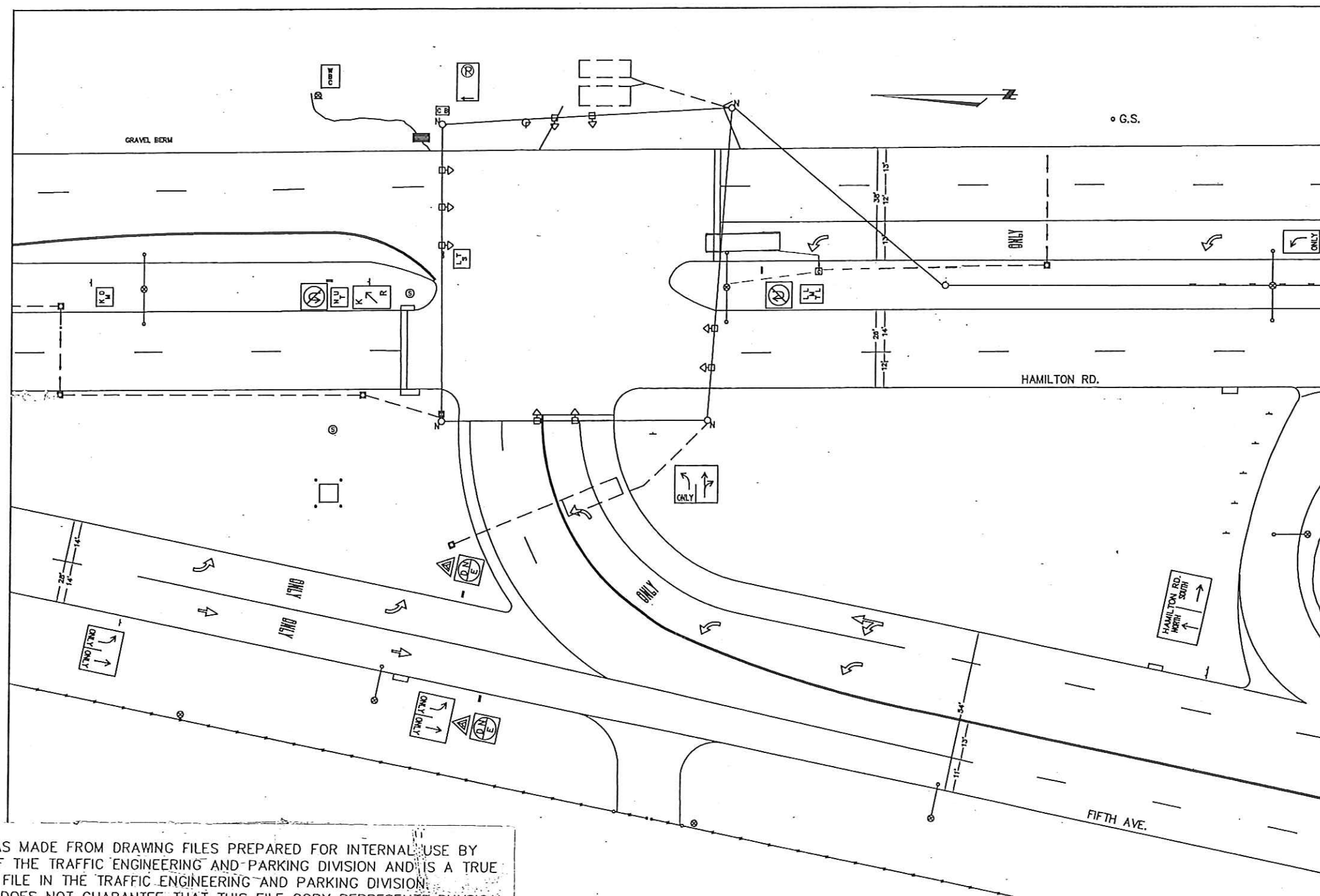
- CITY OF COLUMBUS
UTILITY LEGEND
- ☐ SEWER
 - ☐ WATER
 - ☐ POWER
 - ☐ LIGHTING



REFER TO SHEET 8 FOR
INTERCONNECT SHEET INDEX

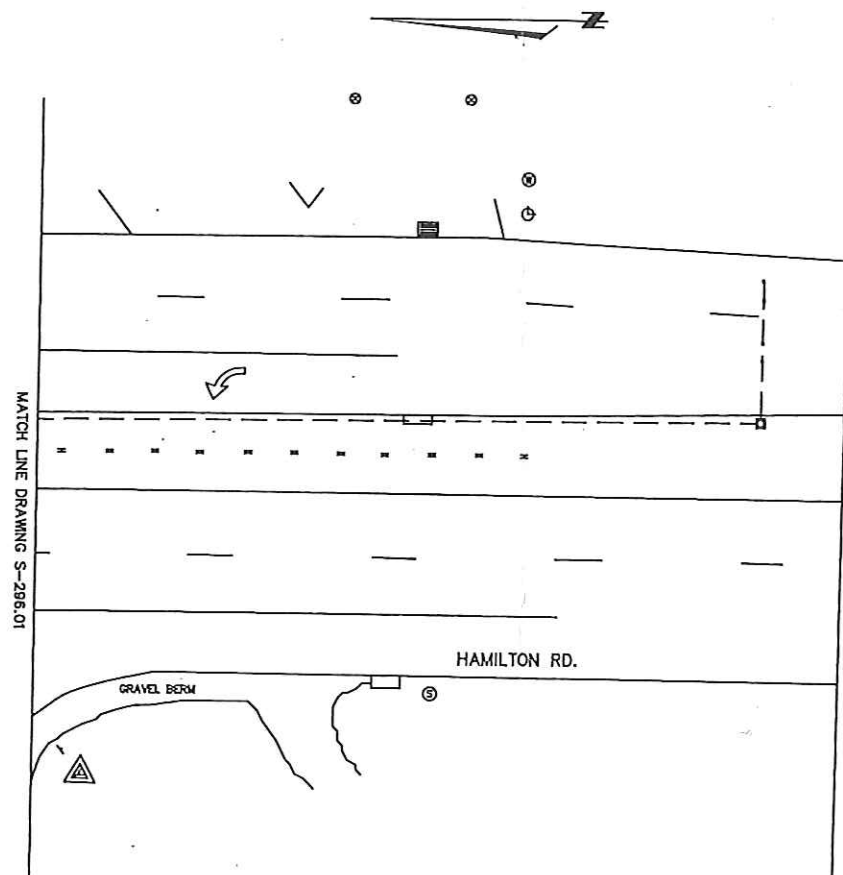
KEY PLAN
NOT TO SCALE





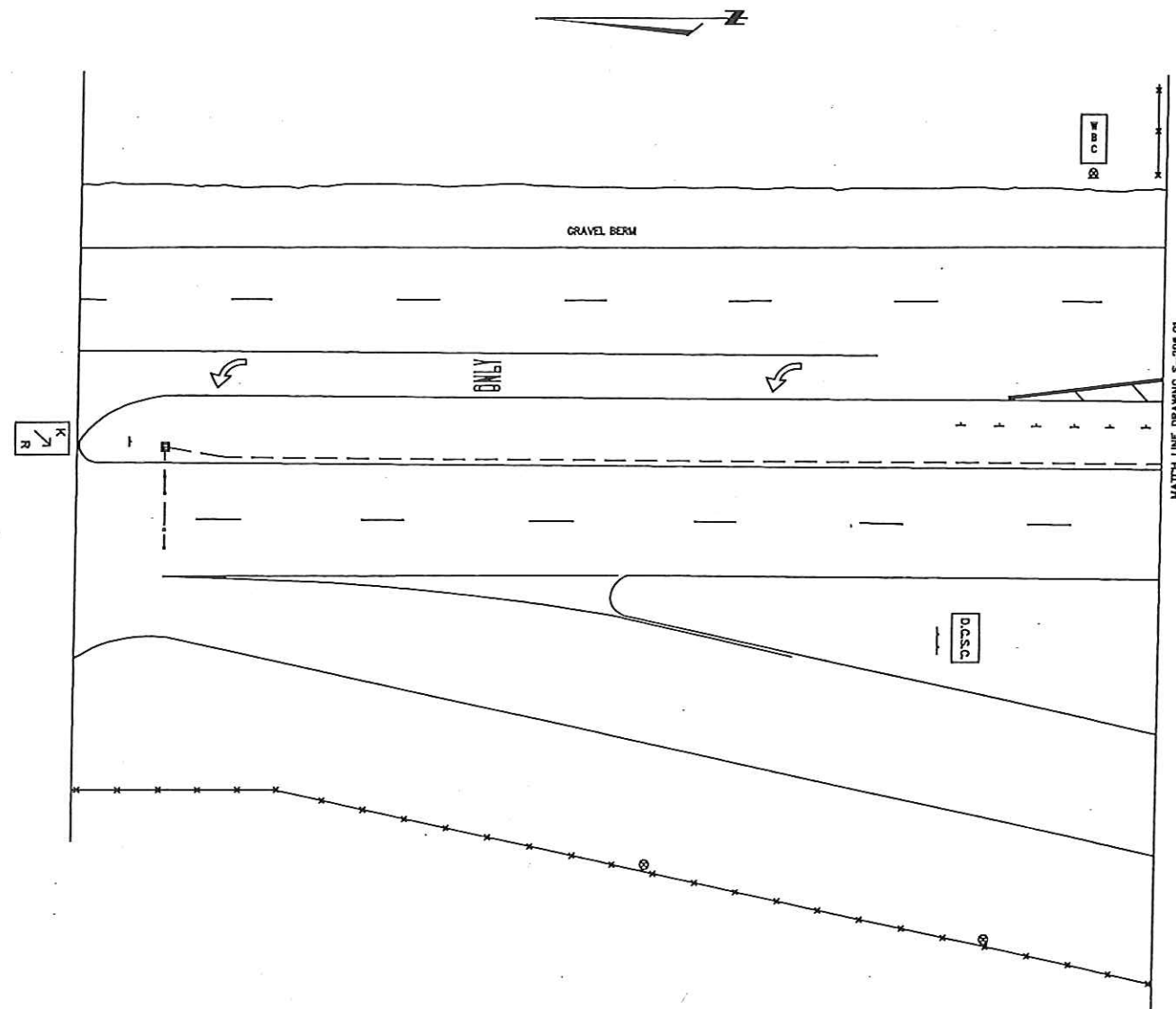
DISCLAIMER:
 THIS COPY WAS MADE FROM DRAWING FILES PREPARED FOR INTERNAL USE BY
 PERSONNEL OF THE TRAFFIC ENGINEERING AND PARKING DIVISION AND IS A TRUE
 COPY OF THE FILE IN THE TRAFFIC ENGINEERING AND PARKING DIVISION.
 THIS DIVISION DOES NOT GUARANTEE THAT THIS FILE COPY REPRESENTS PHYSICAL
 CONDITIONS AS THEY NOW EXIST. WITHIN ACCEPTED TOLERANCES, THE FILE
 WAS ACCURATE AT THE TIME IT WAS MADE. THE USER IS ADVISED TO FIELD
 CHECK ALL PERTINENT DIMENSIONS.

FIFTH AVE. & HAMILTON RD.			
DEPARTMENT OF PUBLIC SERVICE			
DIVISION OF TRAFFIC ENGINEERING AND PARKING			
CITY OF COLUMBUS, OHIO			
INT # 3111			
GIS [FACET] 18635-7225			
DRAWN BY	DATE	3/04	qte
ACAD	11-20-92		
DESIGNED BY	RAE	REVIEWED/ACC	BY
ORIGINAL BY	DATE	SCALE	ML
J.PITTS	10-08-79	1"=20'	S-296.01



DISCLAIMER:
THIS COPY WAS MADE FROM DRAWING FILES PREPARED FOR INTERNAL USE BY PERSONNEL OF THE TRAFFIC ENGINEERING AND PARKING DIVISION AND IS A TRUE COPY OF THE FILE IN THE TRAFFIC ENGINEERING AND PARKING DIVISION. THIS DIVISION DOES NOT GUARANTEE THAT THIS FILE COPY REPRESENTS PHYSICAL CONDITIONS AS THEY NOW EXIST. WITHIN ACCEPTED TOLERANCES, THE FILE WAS ACCURATE AT THE TIME IT WAS MADE. THE USER IS ADVISED TO FIELD CHECK ALL PERTINENT DIMENSIONS.

FIFTH AVE. & HAMILTON RD. EXT.			
DEPARTMENT OF PUBLIC SERVICE			
DIVISION OF TRAFFIC ENGINEERING AND PARKING			
CITY OF COLUMBUS, OHIO			
INT # 3111	GIS [FACET] 18635-7225		
DRAWN BY ACAD	DATE 11-22-92	3/04	qte
DESIGNED BY RAE	REVIEWED/CHECKED		
ORIGINAL BY K.LEE	DATE 09-01-82	SCALE 1"=20'	NO. S-296.03



DISCLAIMER:
THIS COPY WAS MADE FROM DRAWING FILES PREPARED FOR INTERNAL USE BY PERSONNEL OF THE TRAFFIC ENGINEERING AND PARKING DIVISION AND IS A TRUE COPY OF THE FILE IN THE TRAFFIC ENGINEERING AND PARKING DIVISION. THIS DIVISION DOES NOT GUARANTEE THAT THIS FILE COPY REPRESENTS PHYSICAL CONDITIONS AS THEY NOW EXIST. WITHIN ACCEPTED TOLERANCES, THE FILE WAS ACCURATE AT THE TIME IT WAS MADE. THE USER IS ADVISED TO FIELD CHECK ALL PERTINENT DIMENSIONS.

FIFTH AVE. & HAMILTON RD. EXT.
DEPARTMENT OF PUBLIC SERVICE
DIVISION OF TRAFFIC ENGINEERING AND PARKING
CITY OF COLUMBUS, OHIO

INT #	3111
GHS [FACET]	18635-7225
DRAWN BY	ACAD
DATE	11-20-92
DESIGNED BY	RAE
DATE	09-01-82
SCALE	1"=20'
BY	qte
NO.	S-298.02